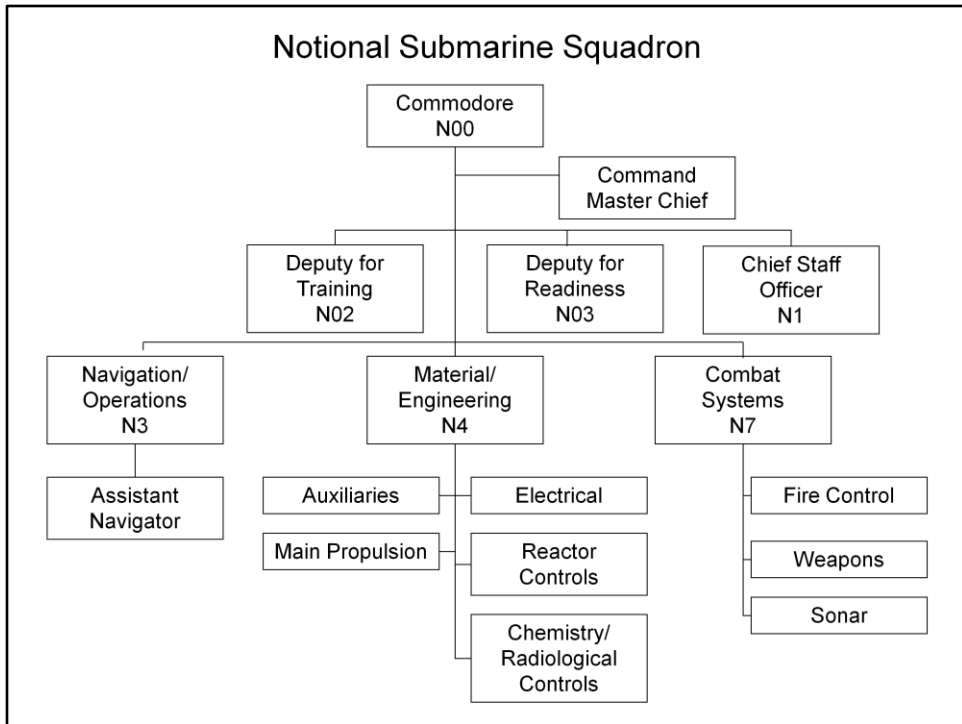


Notional Submarine Squadron



Submarine Squadron Functions

- Submarine squadrons are the primary functional unit that provides the focal point for the TYCOM's man, train, and equip responsibilities in support of the fleet and operational commanders.
- In ports with more than one submarine squadron, a Naval Submarine Support Command (NSSC) is established to economize resources and provide their local Squadron Commanders with a common pool of technical experts.
 - provide administrative and personnel support to afloat units
 - provide material and maintenance planning expertise and QA
 - primary liaison between afloat unit and the IMA
 - provide supply and financial management functions
 - provide medical and legal service to afloat units
- The squadron commander continues to exercise military command of assigned units, including tactical and administrative control.
 - conduct ship and type training for units assigned
 - conduct exercises in support of tactical development, and OPLAN support
 - perform operational evaluations of assigned units
 - monitor the readiness of assigned units
 - schedule maintenance periods to not interfere with operational requirements