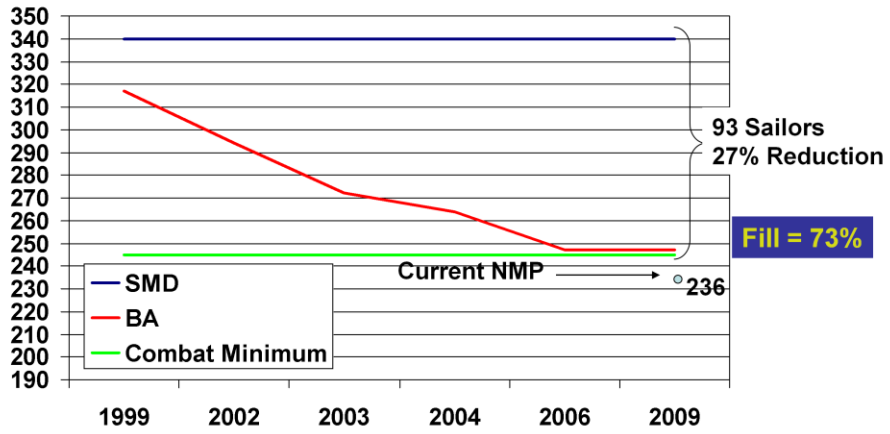




Ship Manning By Class and Mod



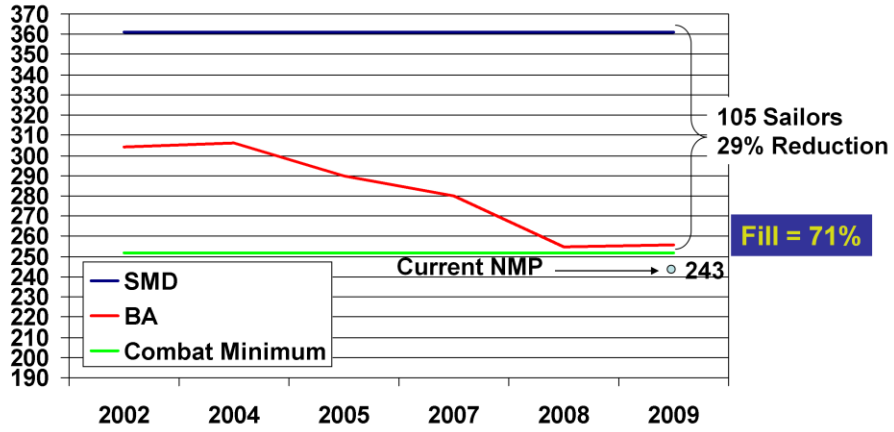
DDG Flt I Manning



Manning is approaching the minimum required for sustained combat operations



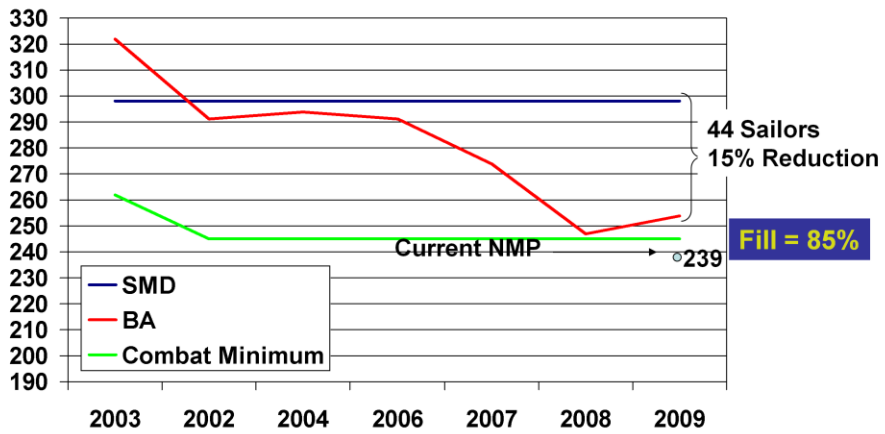
DDG Flt II Manning



Manning is approaching the minimum required for sustained combat operations



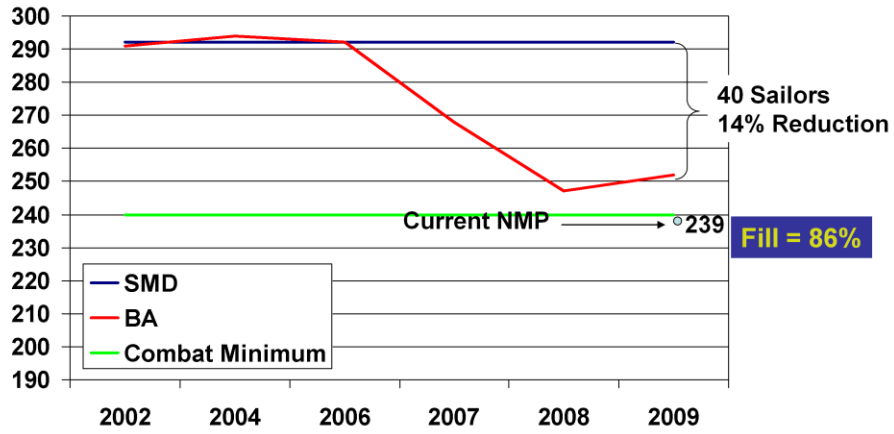
DDG Flt IIA PT I Manning



Manning is approaching the minimum required for sustained combat operations



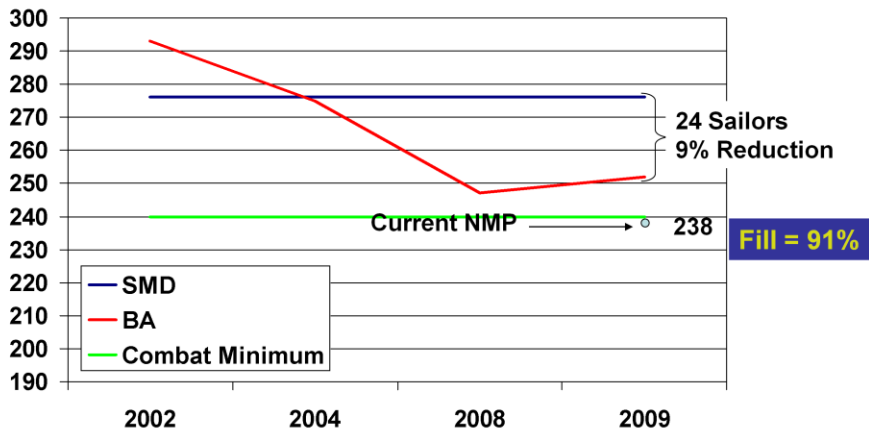
DDG Flt IIA PT II Manning



Manning is approaching the minimum required for sustained combat operations



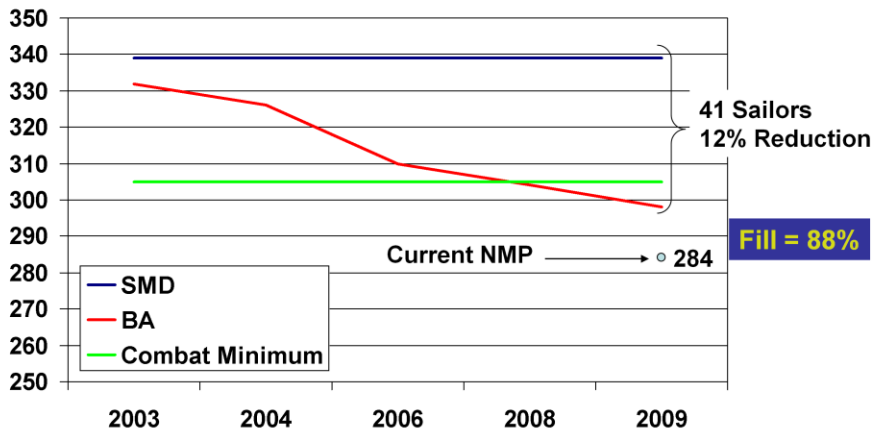
DDG Flt IIA PT III Manning



Manning is approaching the minimum required for sustained combat operations



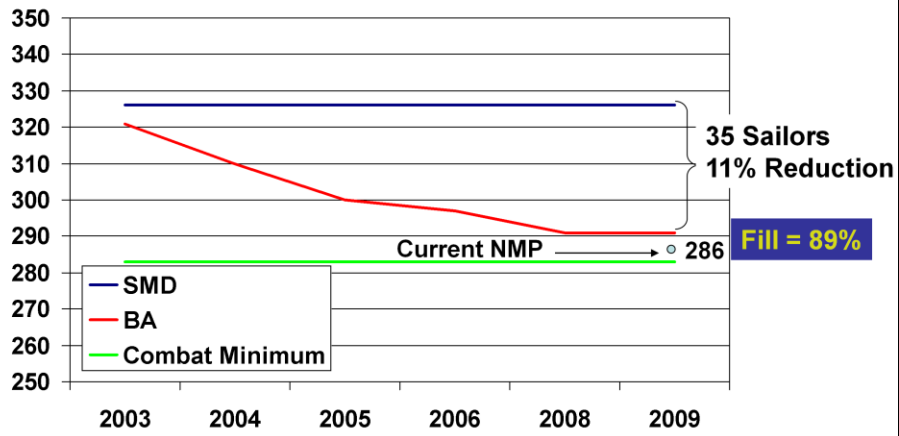
CG (No Mod) Manning



Manning is now below the minimum required for sustained combat operations



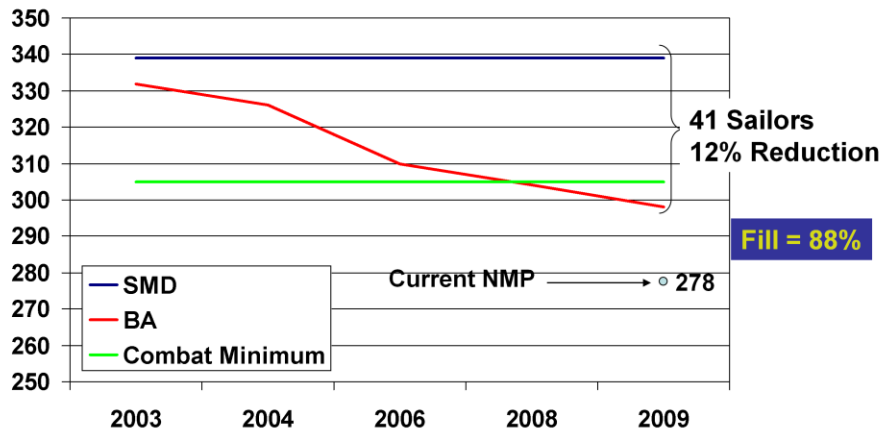
CG (S/S) Manning



Manning is approaching the minimum required for sustained combat operations



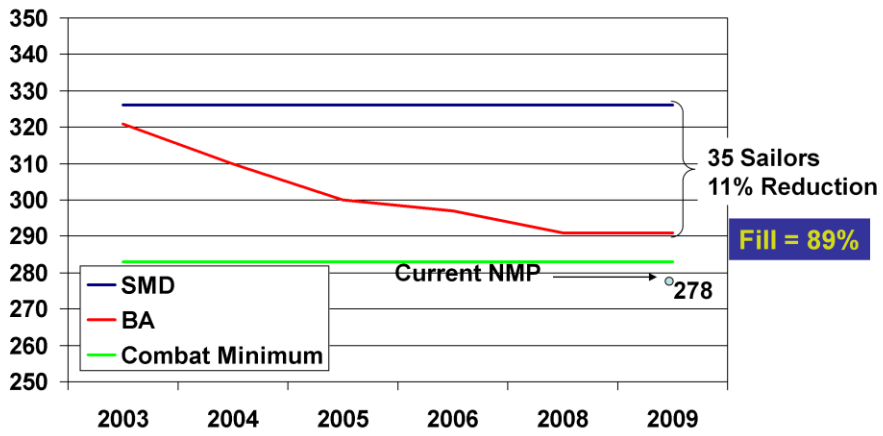
CG (AE) Manning



Manning is now below the minimum required for sustained combat operations



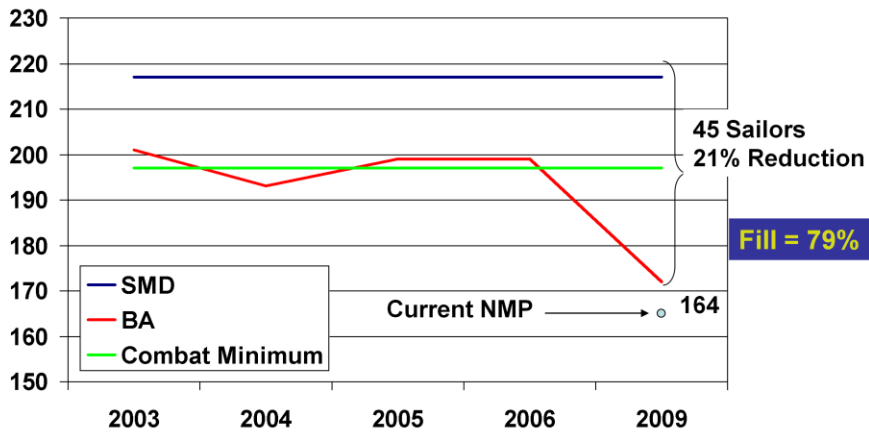
CG (AE S/S) Manning



Manning is approaching the minimum required for sustained combat operations



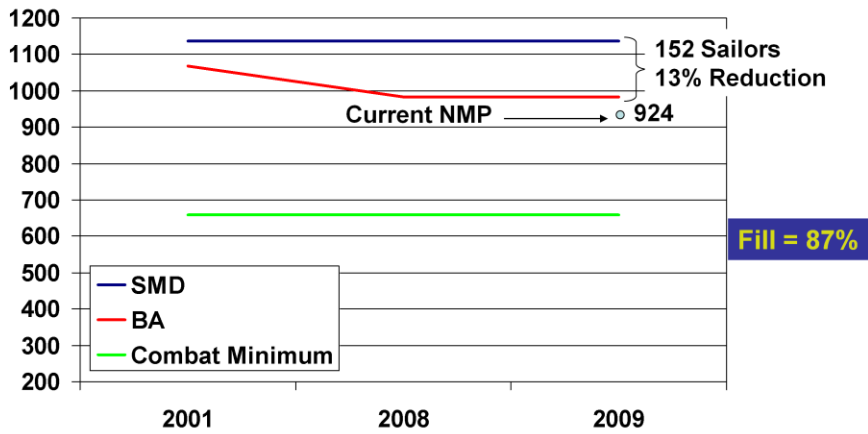
FFG Manning



Manning is now below the minimum required for sustained combat operations



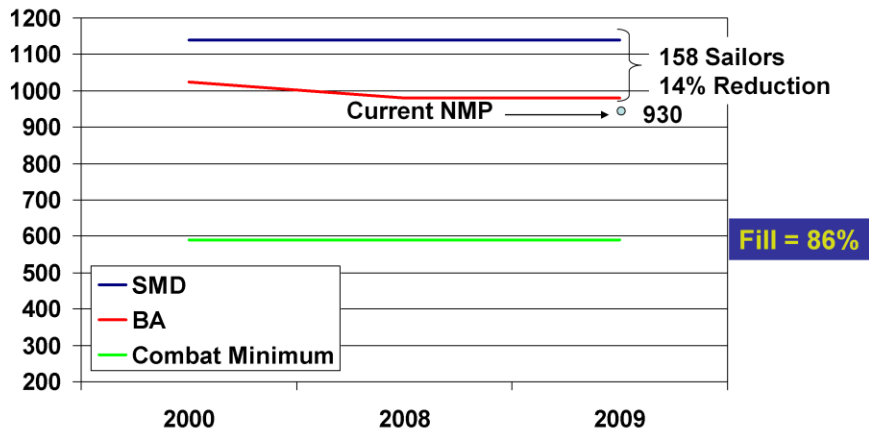
LHD Manning



Manning above minimum for sustained combat operations



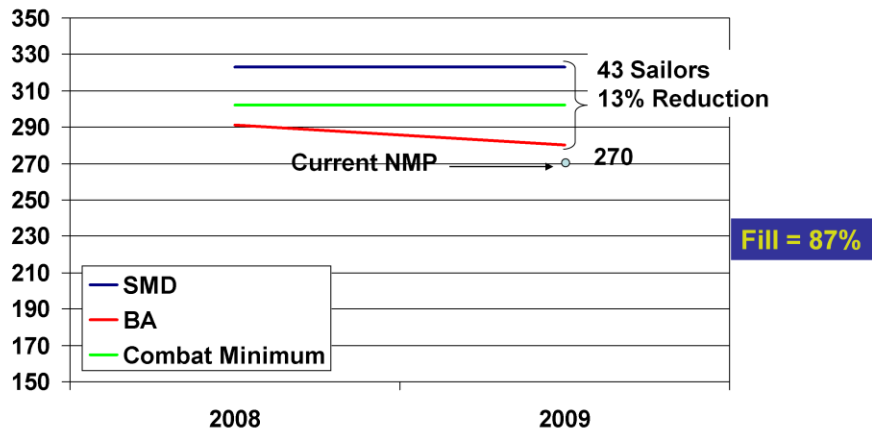
LHA Manning



Manning above minimum for sustained combat operations



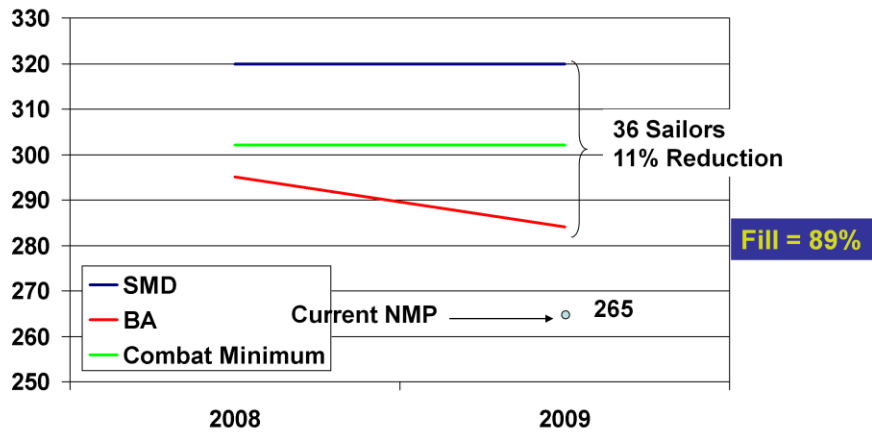
LSD 41 Manning



Manning is now below the minimum required for sustained combat operations



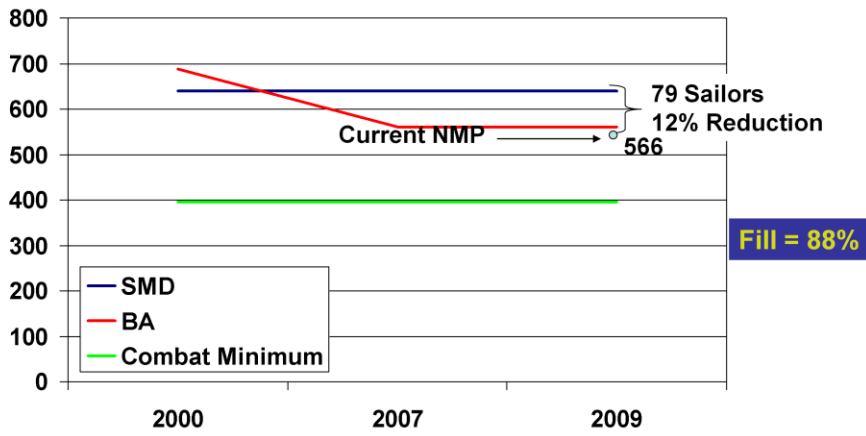
LSD 49 Manning



Manning is now below the minimum required for sustained combat operations



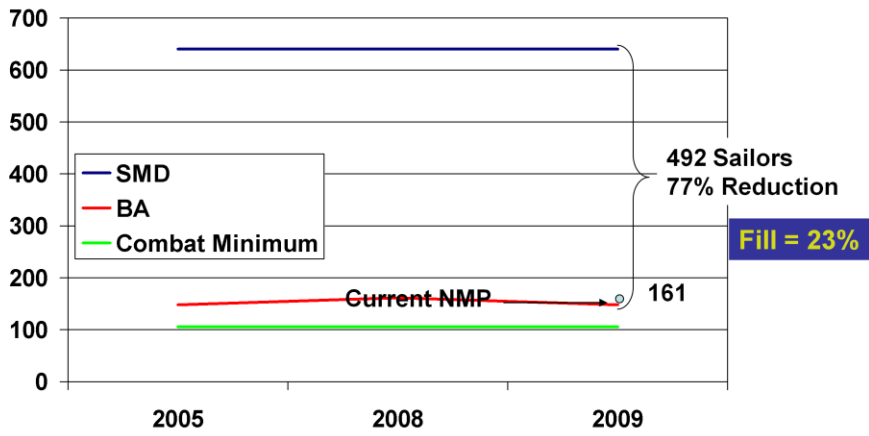
LCC 19 Manning



Manning above minimum for sustained combat operations



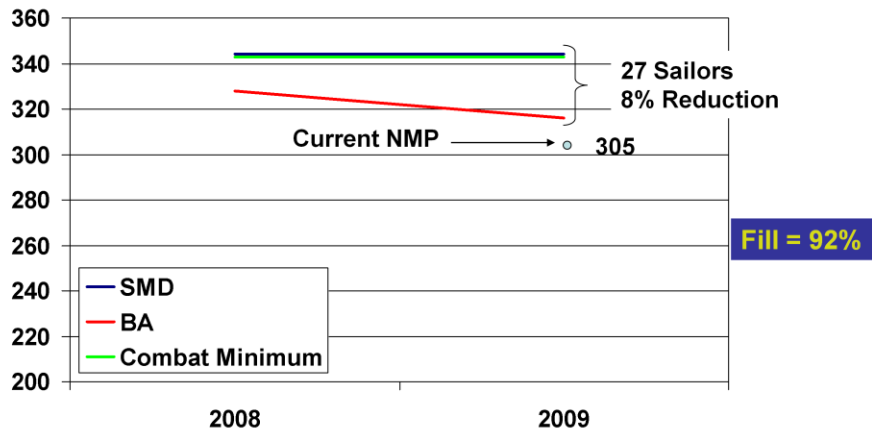
LCC 20 Manning



Manning is approaching the minimum required for sustained combat operations



LPD 17 Manning



Manning is now below the minimum required for sustained combat operations

SMD and Combat Minimum are both 343. SMD graphed at 344 for visibility.